

# No Couplant Required !

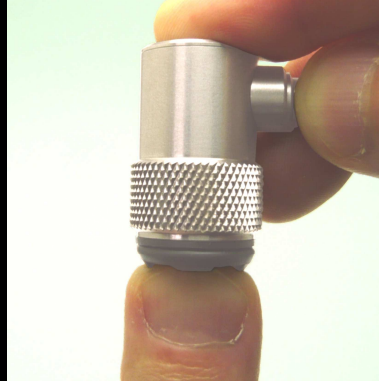
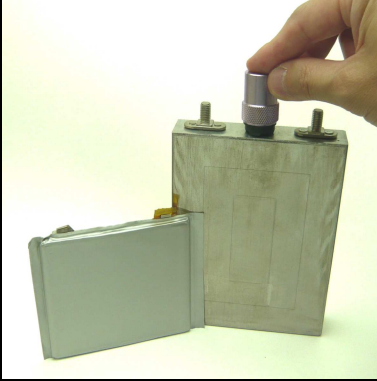
Allowing Dry coupling  
at clean and smooth surfaces

# Fit Freely !

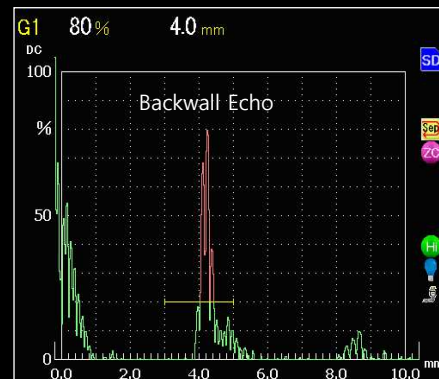
Enabling the inspection of materials  
with flat and curved surfaces.

## Available for Various Applications !

Fitting to various shapes by own structure of transducer,  
and suitable for products without getting wet and dirty.



Example of Piping Thickness  
measurement ( $t = 4\text{mm}$ )



Result of Piping Thickness measurement with  
commercially available ultrasonic flaw detectors

# Ultrasonic Dry Couplant & Flexible Transducer KANTAN

We accept your samples for test at no charge !  
Search "Japan Probe" on website and request it.

# No Couplant Required !    Fit to curved surfaces !

## KANTAN

"KANTAN" is an ultrasonic transducer that realizes inspection and measurement to fit on curved surfaces with its flexibility using 2 layer structure consisting of, "composite elements" and "damping materials". Furthermore, it can be used in a dry status thanks to proprietary technology of "matching layer". Its enhanced usability allows it to be used with commercially available ultrasonic flaw detectors.

### ■ Application Field

- Aerospace                      • Automobile                      • Chemical, Petrochemical plant                      • Road, Bridge
- Metal                              • Machinery                        • Electronics                        • Medical field, etc.

### ■ Target

- Metal, Resin, Human Body, etc.

### ■ Standard Features

- Type : Single or dual element straight beam
- Frequency : 2 ~ 5MHz
- Element size :  $\Phi 5 \sim \Phi 10\text{mm}$
- Connector : LEMO(S) / G51 / C25
- Operating temperature : Room temperature

### ■ Configuration example

- Operating with Ultrasonic Pulsar&Receiver



" KANTAN "



"JPR-50SD"

### ■ Models

- Single element straight beam

Name	Model	Connector	
		Type	Position
KN	2K 5N	LEMO(S) G51	Up / Side
	2K10N		
	5K 5N		
	5K10N		

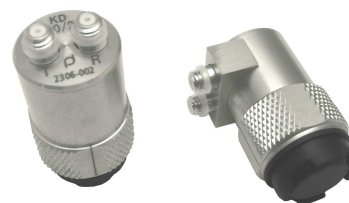
Operable with commercially available ultrasonic flaw detectors !



KN

- Dual element straight beam

Name	Model	Connector	
		Type	Position
KD	2K 5/2ND	C25	Up / Side
	2K10/2ND		
	5K 5/2ND		
	5K10/2ND		



KD

※ We offer customized products based on customers' needs. Please visit 'contact us' by WEB site below.

**Ultrasonic Sensor**  
**JAPAN PROBE**

JP building, 1-1-14, Nakamura-cho, Minami-ku,  
Yokohama, Kanagawa, 232-0033 JAPAN  
TEL : +81-45-242-0531    FAX : +81-45-242-0541  
URL : <https://www.jp-probe.com/en/>    E-mail : [info@jp-probe.com](mailto:info@jp-probe.com)

